

---

---

GEORGE C. CLOSE.

**G**EORGE C. CLOSE, member of the first graduating class (1831) of the College of Pharmacy of the City of New York, whose diploma is shown here, was born at Stamford, Conn., February 9, 1812, the son of Thomas Close, M.D. He died January 15, 1891.

He had served his *Alma Mater* as trustee, vice-president and president. Mr. Close became a member of the AMERICAN PHARMACEUTICAL ASSOCIATION in 1858, at the meeting held in Washington, D. C., and in 1865-1866 was one of its vice-presidents.

He was a frequent contributor to the proceedings of the ASSOCIATION; a paragraph from an article on "Practical Notes and Observations" (1871), which characterized him is quoted:

"Believing it to be the duty of every member of this ASSOCIATION to communicate to his brethren the results of any observations he may have made, which are conducive to their interests or public health, I have concluded, at the risk of being thought presumptuous, to throw in my mite." When the Alumni Association of the New York College of Pharmacy collected funds for their new building, Mr. Close subscribed with these words: "My class subscribes \$10.00 for each man, and as I am the only one left, I will pay for the others as well as for myself."

He was one of the founders of Kings County Pharmaceutical Association and its first president; a member of the Long Island Historical Society and took a great interest in its work.

---

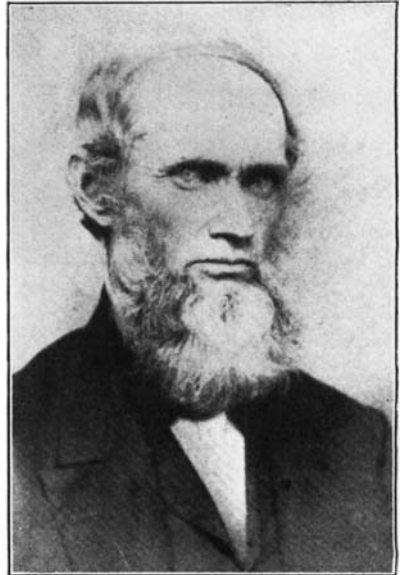
Mr. Close's pharmacy, in 1865, was located at 106 Fulton Street, Brooklyn; in 1870, he removed to the corner of Smith and Schermerhorn Streets, where he remained until about 1884, when he retired from active business. He was of an alert, active mind and clear intellect, he was interested in all scientific progress to the day of his death.

---



*The first diploma, issued to George C. Close, in 1831.*

Names on the Diploma besides that of the recipient: Dr. Smith Rogers, Dr. John Torrey, Oliver Hull, H. H. Schieffelin, *President*; Lindley Murray, John L. Embree, Constantine Adamson.



GEORGE C. CLOSE.

---

---